

HOUSING AND URBAN ENVIRONMENTS

TASK 2 of 2(Individual Task)

<u>Duration</u>	<u>Scale</u>	<u>Activity Type</u>	<u>Content</u>
3 weeks	<u>1:200,1:100,</u> <u>1:50,1:20</u> <u>1:10</u>	<u>Workshop ,2D and 3D</u> <u>Presentation</u>	<u>Housing,</u> <u>Refurbishment,</u> <u>Space Planning,</u> <u>tectonics</u>

“This is a fundamental view of the world. It says that when you build a thing you cannot merely build that thing in isolation, but must repair the world around it, and within it, so that the larger world at that one place becomes more coherent, and more whole; and the thing which you make takes its place in the web of nature, as you make it.”

-Christopher Alexander



Design a refurbishment for the existing building at 10 Berea Road. The design needs to encompass a new integral intervention/ parasitic structure that will allow for an exploration of a pertinent issue that the residents of 10 Berea road are facing.

The plans, sections and models should clearly show the old structure and any additions or changes made to the building.

Within your intervention, you should design a minimum of 1 additional unit type/ 1 layout that has been adapted to suit the inhabitants of the space.

ELECTIVE 2

18 APRIL > 19 MAY
Quarter 2

ELECTIVE CONVENOR
Amira Osman

ASSISTANT
Afua Wilcox

TIME
Mon & Thurs 9-1

VENUE
LG 050

BRIEF

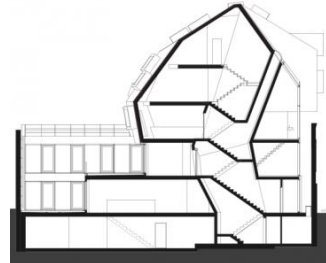
VOCABULARY

Refurbishment, parasitic, tectonics, space planning, privacy, materiality, unit planning, sustainability,

façade, water proofing, circulation.

EVALUTION CRITERIA:

- Understanding of existing buildings structural and social issues
- Sustainability of solutions
- Sensitivity towards existing materials and textures
- Understanding of tectonic methodology
- Legibility of Design Narrative
- Translation of concepts into design ideas
- Architectural Presentation and Design Ideas
- Selection of appropriate medium.
- Spatial compositions with regards to movement and ergonomics

**SUBMISSION REQUIREMENTS:**

You will have to express your intervention and focus area of building with a minimum of the following:

- Circulation and levels of privacy diagrams
- Perspective/ composite image that includes perspective that will showcase the essence of your design.
- A site plan showing the relationship of the building to its context
- 1:200 site plan showing intervention in surrounding context
- Ground floor & other floor plan for the whole building
- Sections of building and intervention
- 1:50 resolved plan of intervention/unit
- 1:20 resolved section of intervention
- 1:5 detail of intervention
- 1:50/1:20 model of intervention

SUGGESTED READING**INFORMALITY**

Abbott, J., 2002. An analysis of informal settlement upgrading and critique of existing methodological approaches. *Habitat Int.* 26, 303–315.

Smit, D., Abrahams, G., 2010. Incrementally securing tenure: An approach for informal settlement upgrading in South Africa. *Urban Landmark*.

Worcester Polytechnic Institute WPI, Community Organization Resource Centre CORC, n.d. *Reblocking: A Partnership Guide* A handbook to support the reblocking of informal settlements through a multiple stakeholder effort. WPI Cape Town Project Centre.

ELECTIVE 2

18 APRIL > 19 MAY

Quarter 2

ELECTIVE CONVENOR

Amira Osman

ASSISTANT

Afua Wilcox

TIME

Mon & Thurs 9-1

VENUE

LG 050

BRIEF

DESIGN

Alexander, C., Schmidt, R., Alexander, M.M., Hanson, B., Mehaffy, M., 2005. Generative Codes The Path to Building Welcoming, Beautiful, Sustainable Neighborhoods Version 17.

Brand, S., 1995. How buildings learn: what happens after they're built, Penguin Books.

Habraken, N.J., Teicher, J., 2000. The structure of the ordinary: form and control in the built environment. The MIT Press.

Lewis, S., 2005. Front to back: a design agenda for urban housing. Elsevier.

Teicher, J., Kendall, S., 2007. Residential Open Building. Taylor & Francis.

POLICY

Department of Housing, 2004. "Breaking New Ground" – The Comprehensive Plan for the Development of Sustainable Human Settlements.

Dewar, D. 1997. The housing issue in South Africa in H. Tilman (Ed), Integration or fragmentation: The housing generator Competition for South African cities. Rotterdam: Netherlands Architecture Institute.

Dewar, D & Uytenbogaardt, R.S. 1995. Creating vibrant urban places to live: A primer, Cape Town: New Housing Company.

Tadamun, 2014. The Landmark Case of Grootboom versus the Republic of South Africa. Tadamun.

APARTHEID PLANNING

Fisher, R.C., Roux, S.L., Maré, E., 1998. Architecture of the Transvaal. University of South Africa.

Vladislavic, I., Hilton, J., Judin, H., 1998. Blank: Architecture, Apartheid and After, illustrated edition. ed. NAI Publishers.

COMMUNITY ENGAGEMENT AND PARTICIPATION

Hamdi, N. 2010. The placemaker's guide to building community (tools for community planning). London: Earthscan.

Hamdi, N., 2004. Small change: About the art of practice and the limits of planning in cities. Earthscan/James & James.

Turner, JFC. 1972. Freedom to build: dweller control of the housing process. Macmillan

INTERNATIONAL EXPERIENCES

Hackney, R., Sweet, F., 1990. The good, the bad, and the ugly: cities in crisis. F. Muller.

Hanley, L., 2007. Estates: an intimate history. Granta.

Kidder, T., 1999. House, 1st Mariner Books Ed edition. ed. Mariner Books, Boston.

OPEN BUILDING RELEVANCE IN SA

Osman, A., Davey, C., 2011. Sustainable building transformation in the South African housing sector: CSIR case studies.

ELECTIVE 2

18 APRIL > 19 MAY
Quarter 2

ELECTIVE CONVENOR
Amira Osman

ASSISTANT
Afua Wilcox

TIME
Mon & Thurs 9-1

VENUE
LG 050

BRIEF



Osman, A., Herthogs, P., Davey, C., 2011. Are open building principles relevant in the South African housing sector? CSIR investigations and analysis of housing case studies for sustainable building transformation., in: Management Innovation for a Sustainable Built Environment. Presented at the Management Innovation for a Sustainable Built Environment, Delft University of Technology, Delft, The Netherlands, Amsterdam, the Netherlands.

Osman, A., Sebake, N., 2010. "Time" as a key factor in design and technical decision-making: concepts of accessibility, affordability, participation, choice, variety and change in the South African Housing sector.

Osman, A., Sebake, N., Arvanitakis, D., 2013. A vision for sustainable human(e) settlements in South Africa: "base building" infrastructure for mixed residential developments. Presented at the 2nd International Conference on Infrastructure Development in Africa (ICIDA 2013), University of Johannesburg, Johannesburg, South Africa.

ELECTIVE 2

18 APRIL > 19 MAY

Quarter 2

ELECTIVE CONVENOR

Amira Osman

ASSISTANT

Afua Wilcox

TIME

Mon & Thurs 9-1

VENUE

LG 050



BRIEF

ELECTIVE 2 | PROJECT 2 | QUARTER 2

UNIVERSITY OF JOHANNESBURG | FACULTY OF ART, DESIGN & ARCHITECTURE | DEPARTMENT OF ARCHITECTURE

3 / 5